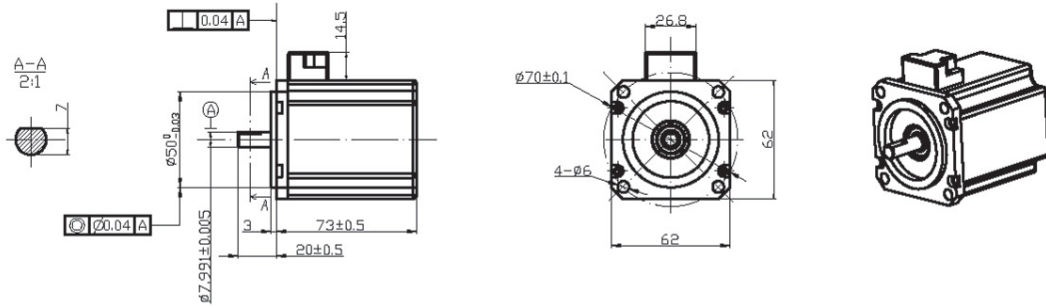


BA62 | Brushless



Motor parameters

	Motor model		BA6212	BA6224	BA6236	BA6248	
1	No load voltage	V	12	24	36	48	volts
2	No load speed	Wnl	4020	4020	6030	8040	rpm
3	No load current	Inl	1.0	0.5	0.7	0.9	Amps
4	Nominal voltage	Vc	12	24	36	48	VDC
5	Nominal torque	Tc	0.52	0.52	0.52	0.52	Nm
6	Nominal speed	Wc	3000	3000	4700	6500	rpm
7	Nominal current	Ic	19.8	9.9	9.9	9.9	amps
8	Output power	Pc	163	163	256	354	watts
9	Motor constant	Km	1.84	0.93	0.93	0.93	Nm/sqrt (W)
10	Torque constan	Kt	0.029	0.058	0.058	0.058	Nm/amp
11	Back EMF constant	Kv	0.029	0.058	0.058	0.058	V/rad./s
		Ke	329.3	164.6	164.6	164.6	rpm/volt
12	Terminal resistance	Rt	0.08	0.31	0.31	0.31	ohms (Ω)
13	Cogging and hysteresis torque	Tc Th	0	0	0	0	mNm
14	Stator inductance	L	10	10	10	10	uH
15	Mechanical time constant	Tm	18	18	18	18	ms
16	Electrical time constant	Te	0.036	0.036	0.036	0.036	ms
17	Motor weight	Wt	0.83				kg
18	Max efficiency	η	80	82	84	86	%
19	Max permissible temperature of rotor	Temp 1	110				°C
20	Max temperature of stator coil	Temp2	120				°C
21	Wire connection	U: green V: black W: red +5V: yellow GND: gray H1: brown H2: orange H3: blue temperature control resistance: purple					

Copper-plated Coreless Brushless Motor

Graph

