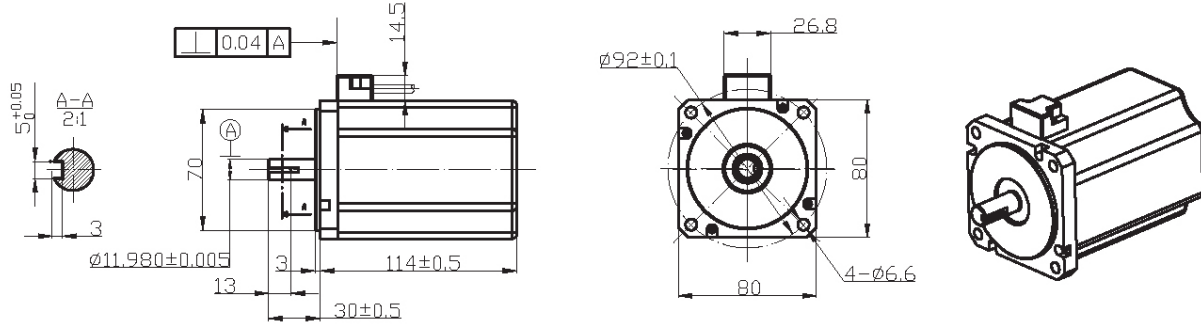


# BA80 | Brushless



## Motor parameters

	Motor model		BA6024	BA8048		
1	No load voltage	V	24	48	volts	
2	No load speed	Wnl	4500	4500	rpm	
3	No load current	Inl	1.4	0.7	Amps	
4	Nominal voltage	Vc	24	48	VDC	
5	Nominal torque	Tc	0.9	0.9	Nm	
6	Nominal speed	Wc	3720	3720	rpm	
7	Nominal current	c	19.4	9.7	amps	
8	Output power		Pc	351	351	watts
9	Motor constant	Km	3.18	1.62	Nm/sqrt (W)	
10	Torque constant	Kt	0.051	0.102	Nm/amp	
11	Induced voltage constant	Kv	0.051	0.102	V/rad./s	
		Ke	187.2	93.6	rpm/volt	
12	Terminal resistance	Rt	0.08	0.31	ohms (Ω)	
13	Cogging & hysteresis torque	Tc Th	0	0	mNm	
14	Stator inductance	L	12	3	uH	
15	Mechanical time constant	Tm	18	18	ms	
16	Electrical time constant	Te	0.08	0.08	ms	
17	Motor weight	Wt	1.7	1.7	kg	
18	Max efficiency	η	82	85	%	
19	Max temperature of rotor	Temp 1	110	110	°C	
20	Max temperature of stator coil	Temp2	120	120	°C	
21	Wire connection	U: green V: black W: red +5V: yellow GND: gray H1: brown H2: orange H3:blue Temperature control resistance: purple				

## Graph

