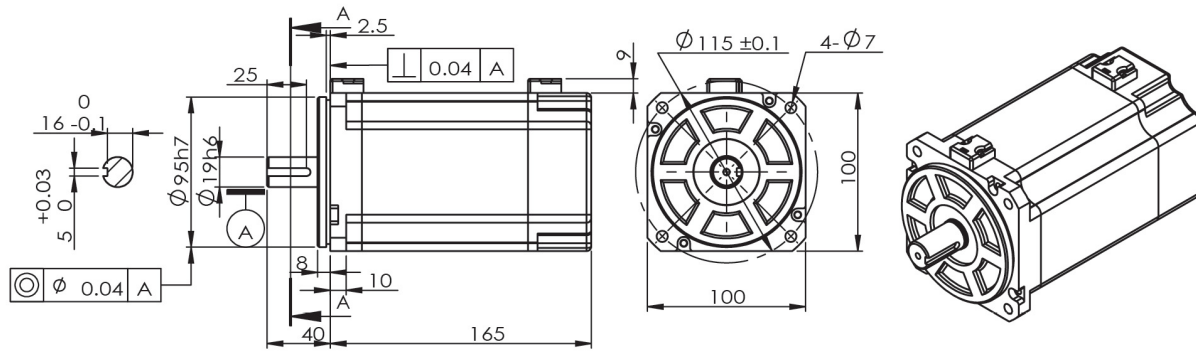


SA100 | Servo

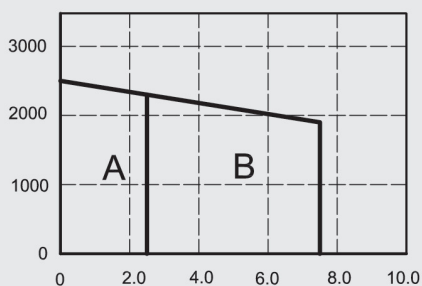


Motor Data

1	motor model		SA10048	SA10072	
2	nominal power	PR	600	900	W
3	nominal voltage	VT	48	72	V
4	nominal current	IR	15	15	A
5	instantaneous maximum current	IP	45	45	A
6	nominal speed	NR	2300	3450	rpm
7	maximum speed	NP	2500	3750	rpm
8	nominal torque	TR	2.5	2.5	Nm
9	peak torque	TP	7.5	7.5	Nm
10	torque constant	KT	0.183	0.183	Nm / A
11	back EMF constant	Ke	52.1	52.1	V / Krpm
12	rotor inertia	J	35.4	35.4	Kg*cm ²
13	terminal resistance	R	0.24	0.24	Ω
14	cogging and hysteresis torque	Tc Th	0	0	mNm
15	terminal inductance	L	48.5	48.5	μH
16	mechanical time constant	Tm	26	24	ms
17	electric time constant	Te	0.202	0.202	ms
18	number of pole pairs	2p	4	4	
19	weight of motor	W	4.2	4.2	Kg
20	encoder options		incremental (2500PPR) \ Absolute (17\33 bit)		
21	motor insulation class		class B		
22	protection class		IP64		
23	ambient temperature		-20~+40°C		

coreless motor | Servo

Graph



SA10048

A: Continuous Working Area
B: Repeatedly Working Area