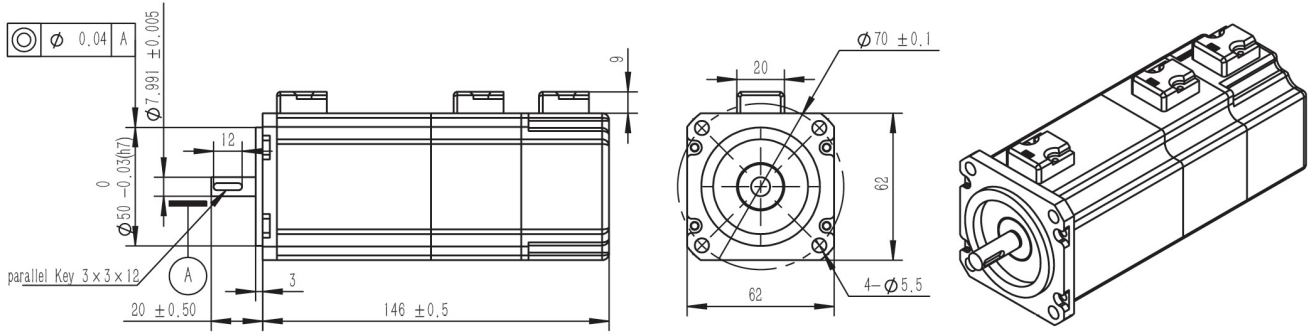


# SA62B | Servo | Brake



## Motor Data

1	motor model		SA6212B	SA6224B	SA6236B	
2	nominal power	PR	188	188	284	W
3	nominal voltage	VT	12	24	36	V
4	nominal current	IR	22.8		11.4	A
5	instantaneous maximum current	IP	45		35	A
6	nominal speed	NR	3000	3000	4520	RPM
7	maximum speed	NP	4000	4000	5000	RPM
8	nominal torque	TR	0.6		0.6	Nm
9	peak torque	TP	1.2		1.8	Nm
10	torque constant	KT	0.029		0.058	Nm/A
11	back EMF constant	Ke	3.03		6.07	V/Krpm
12	rotor inertia	J	1.98		1.98	Kg*cm <sup>2</sup>
13	nominal angular acceleration	Ar	2626		2626	rad/s <sup>2</sup>
14	terminal resistance	R	0.08		0.31	Ω
15	cogging and hysteresis torque	Tc Th	0		0	mNm
16	terminal inductance	L	9.0		35	uH
17	mechanical time constant	Tm	22		22	ms
18	electrical time constant	Te	0.113		0.114	ms
19	number of pole pairs	2p	4		4	
20	weight of motor	W	1.51		1.51	Kg
21	encoder options		incremental (2500PPR) \ Absolute (17/33bit)			
22	motor insulation class		class B			
23	protection class		IP64			
24	ambient temperature		-20~+40°C			

coreless motor | Servo

## Graph

A: Continuous Working Area  
B: Repeatedly Working Area

